

LEVERAGE



Meet the New Family



Leverage is a wholesale exclusive family that boasts a unique quick install nut on all two handle faucets and single handle kitchen pull-down faucets. In addition, all lavatory faucets come with push pop-ups in various configurations. Due to our longstanding commitment to water conservation, all Leverage faucets are **California Energy Commission** compliant and all lavatory faucets and showerheads are **EPA WaterSense Certified**. Our Leverage widespreads, kitchens with side sprays, pull downs & pullouts come with a knuckle saving quick connect system that is designed to save the plumbing professional time, frustration and the chance of a leak point.

Every single Leverage faucet is backed with our limited lifetime finish and function warranty **regardless of the application!** Leverage continues our tradition of providing you with quality components such as metal tub spouts, metal ball joints and metal shanks! All Leverage tub & shower, shower only and valve only trim pack configurations accept our existing 799 pressure balancing rough-in valves, with and without stops. Leverage proudly carries on our 69 year tradition of catering exclusively to the plumbing professional!

LEVERAGE

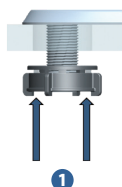


Quick Mount Installation Nut



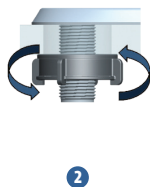
Perfect for the Pro!
Our "Quick Mount Installation Nut" installs in seconds.

Before Tightening



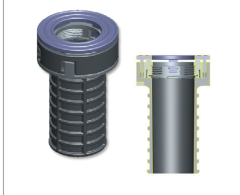
1
Place Quick Mount Nut onto shank underneath deck plate.

After Tightening

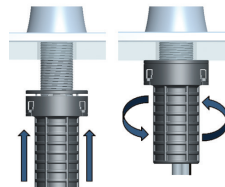


2
Push all the way up and twist until tight.

Quick Mount Installation Nut

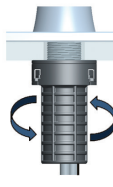


Before Tightening



1
Place Quick Mount Nut onto shank underneath deck plate.

After Tightening



2
Push all the way up and twist until tight.

Leverage Push Pop-Up Options



M MATCO-NORCA NEW FAUCET FAMILY

LEVERAGE

CERAMIC CARTRIDGES KITCHEN & BAR FAUCETS

Single Handle Ceramic Valve Kitchen Faucets



LV-100C



LV-100SS

Single Hole or Three Hole Mount, Deckplate Included, Copper Inlet Supply, Ceramic Cartridge, 1.5 GPM
Available in: Chrome & Stainless Steel



LV-140C



LV-140SS

Two Hole or Four Hole Mount, Deckplate Included, Copper Inlet Supply, Ceramic Cartridge, 1.5 GPM
Available in: Chrome & Stainless Steel



LV-150C



LV-150SS

Single Hole or Three Hole Mount, Deckplate Included, Copper Inlet Supply, Ceramic Cartridge, 1.5 GPM
Available in: Chrome & Stainless Steel



LV-151C



LV-151SS

Single Hole or Three Hole Mount, Quick Mount Installation, Deckplate Included, with Integrated Supply Lines, Ceramic Cartridge, 1.8 GPM, Available in: Chrome & Stainless Steel

For pricing visit our website at www.matco-norca.com or contact your local Matco-Norca representative

M MATCO-NORCA NEW FAUCET FAMILY

Two Handle Ceramic Valve Kitchen Faucets



LV-200C

Three Hole Mount, Quick Mount Installation,
Ceramic Cartridges, 1.5 GPM
Available in: Chrome



LV-240C

Four Hole Mount, Quick Mount Installation,
Ceramic Cartridges, 1.5 GPM
Available in: Chrome



LV-250C



LV-250SS

Three Hole Mount, Quick Mount Installation,
Ceramic Cartridges, 1.5 GPM
Available in: Chrome & Stainless Steel



LV-260C



LV-260SS

Four Hole Mount, Quick Mount Installation,
Ceramic Cartridges, 1.5 GPM
Available in: Chrome & Stainless Steel

Two Handle Ceramic Valve Bar Faucet



LV-320C

4" Centerset, Quick Mount
Installation, Ceramic Cartridges, 1.5 GPM
Available in: Chrome

For pricing visit our website at www.matco-norca.com or contact your local Matco-Norca representative

M MATCO-NORCA NEW FAUCET FAMILY

LEVERAGE

CERAMIC CARTRIDGES LAVATORY FAUCETS SINGLE CONTROL TUB & SHOWER TRIMS

Single Handle Ceramic Valve Lavatory Faucets



LV-500CF



LV-500BNF

Single Hole or Three Hole Mount, Deckplate Included, Integrated Supply Lines, 50/50 Push Pop-Up, Ceramic Cartridge, 1.5 GPM
Available: Chrome & Brushed Nickel

Two Handle Ceramic Valve Lavatory Faucets



LV-400CL

4" Centerset, Quick Mount Installation, Less Pop-Up Ceramic Cartridges, 1.2 GPM
Available: Chrome

Two Handle Ceramic Valve Lavatory Faucets



LV-400CF



LV-400BNF

4" Centerset, Quick Mount Installation, 50/50 Push Pop-Up, Ceramic Cartridge, 1.2 GPM
Available: Chrome & Brushed Nickel



LV-400CP



LV-400BNP

4" Centerset, Quick Mount Installation, Plastic Push Pop-Up, Ceramic Cartridges, 1.2 GPM
Available: Chrome & Brushed Nickel

For pricing visit our website at www.matco-norca.com or contact your local Matco-Norca representative

M MATCO-NORCA NEW FAUCET FAMILY

Two Handle Ceramic Valve Lavatory Faucets



LV-420CF
LV-420CP



LV-420BNF*

4" Centerset, Quick Mount Installation, Ceramic Cartridges, 1.2 GPM, Available: Chrome & Brushed Nickel

***Example of adding an appendix to the part number.**

LV-420BNF

LV: Leverage

Description: 4" Centerset, Quick Mount Installation, Ceramic Cartridges, 1.2 GPM

BN: Brushed Nickel

F: 50/50 Push Pop-Up

Add **L** (Less Pop-Up) to the end of the part number

Add **F** (50/50 Push Pop-Up) to the end of the part number

Add **P** (Plastic Push Pop-Up) to the end of the part number

Two Handle Ceramic Valve Lavatory Faucets



LV-480CF



LV-480BNF

8" Widespread, Quick Mount Installation, 50/50 Push Pop-Up, Ceramic Cartridges, 1.2 GPM, Available: Chrome & Brushed Nickel

Single Control Valve Trims



LV-700CJP



LV-700BNJP

Valve Trim Only, Job Pack
Available: Chrome & Brushed Nickel

Single Control Shower Trims



LV-720CJP



LV-720BNJP

Shower Trim Only, 6" Showerhead, Job Pack, 1.8 GPM
Available: Chrome & Brushed Nickel

Single Control Tub & Shower Trims



LV-730CJP



LV-730BNJP

Tub & Shower Trim Only, 6" Showerhead, Metal Slip On Tub Spout, Job Pack, 1.8 GPM, Available: Chrome & Brushed Nickel

For pricing visit our website at www.matco-norca.com or contact your local Matco-Norca representative

MATCO-NORCA NEW FAUCET FAMILY

LEVERAGE

WASHERLESS CARTRIDGES KITCHEN & BAR FAUCETS

Single Handle Washerless Valve Kitchen Faucets



LV-105C



LV-105SS

Three Hole Mount, Copper Inlet Supply, Washerless, 1.5 GPM
Available: Chrome & Stainless Steel



LV-135C

Three Hole Mount, Copper Inlet Supply, Washerless, 1.5 GPM
Available: Chrome

Single Handle Washerless Valve Kitchen Faucets



LV-145C



LV-145SS

Four Hole Mount, Copper Inlet Supply, Washerless, 1.5 GPM
Available: Chrome & Stainless Steel

Two Handle Washerless Valve Kitchen Faucets



LV-205C

Three Hole Mount, Quick Mount Installation, Washerless,
1.5 GPM, Available: Chrome

For pricing visit our website at www.matco-norca.com or contact your local Matco-Norca representative

M MATCO-NORCA NEW FAUCET FAMILY

Two Handle Washerless Valve Kitchen Faucets



LV-245C

Four Hole Mount, Quick Mount Installation, Washerless, 1.5 GPM, Available: Chrome



LV-202C

Three Hole Mount, Quick Mount Installation, Washerless, 1.5 GPM, Available: Chrome



LV-242C

Four Hole Mount, Quick Mount Installation, Washerless, 1.5 GPM, Available: Chrome



LV-250CB

Wrist Blade Handles, Three Hole Mount, Quick Mount Installation, Washerless, 1.5 GPM, Available: Chrome

Two Handle Washerless Valve Bar Faucets



LV-325C

4" Centerset, Quick Mount Installation, Washerless, 1.5 GPM, Available: Chrome



LV-325CB

4" Centerset, Wrist Blade Handles, Quick Mount Installation, Washerless, 1.5 GPM, Available: Chrome

For pricing visit our website at www.matco-norca.com or contact your local Matco-Norca representative

MATCO-NORCA NEW FAUCET FAMILY

LEVERAGE

WASHERLESS CARTRIDGES LAVATORY FAUCETS SINGLE CONTROL TUB & SHOWER TRIMS

Single Handle Washerless Valve Lavatory Faucets



LV-505C*



LV-505BN*

Add **L** (Less Pop-Up) to the end of the part number
Add **F** (50/50 Push Pop-Up) to the end of the part number
Add **P** (Plastic Push Pop-Up) to the end of the part number

4" Centerset, Washerless, 1.2 GPM
Available: Chrome & Brushed Nickel

Two Handle Washerless Valve Lavatory Faucets



LV-405C*

Add **L** (Less Pop-Up) to the end of the part number
Add **F** (50/50 Push Pop-Up) to the end of the part number
Add **P** (Plastic Push Pop-Up) to the end of the part number

4" Centerset, Quick Mount Installation, Washerless, 1.2 GPM
Available: Chrome

Two Handle Washerless Valve Lavatory Faucets



LV-402C*

Add **L** (Less Pop-Up) to the end of the part number
Add **F** (50/50 Push Pop-Up) to the end of the part number
Add **P** (Plastic Push Pop-Up) to the end of the part number

4" Centerset, Quick Mount Installation, Washerless, 1.2 GPM
Available: Chrome

Two Handle Washerless Valve Lavatory Faucets



LV-405CLB

4" Centerset, Wrist Blade Handles, Quick Mount Installation,
Less Pop-Up, Washerless, 1.2 GPM, Available: Chrome

* See page 7 for example of adding an appendix to a part number.

For pricing visit our website at www.matco-norca.com or contact your local Matco-Norca representative

M MATCO-NORCA NEW FAUCET FAMILY

Two Handle Washerless Valve Lavatory Faucet



LV-480CLB

8" Widespread, Wrist Blade Handles, Quick Mount Installation, Less Pop-Up, Washerless, 1.2 GPM, Available: Chrome

Single Control Valve Trim



LV-705CJP

Single Handle Valve Trim Only, Job Pack Available: Chrome

Single Control Shower Trim



LV-725CJP

Single Handle Shower Trim Only, Core Showerhead, Job Pack, 1.8 GPM, Available: Chrome

Single Control Tub & Shower Trim



LV-735CJP

Single Handle Tub & Shower Trim Only, Core Showerhead, Metal Slip On Tub Spout, Job Pack, 1.8 GPM, Available: Chrome

Rough-In Valves



SR-799



SR-799WS

- SR-799 Less Stops, MIP & CC
- SR-799WS With Stops, MIP & CC
- SR-799P Less Stops, PEX B
- SR-799PWS With Stops, PEX B
- SR-799A Less Stops, PEX A F1960
- SR-799AWS With Stops, PEX A F1960

Replacement Cartridges & Extension Kits



- SR-798 Less Stops
 - SR-798WS With Stops
- Replacement Cartridge for Pressure Balancing Valves



- Extension Kit:
Fits Our
Pressure
Balancing
Rough-In
Valves With
& Without
Stops**
- SR-797C Chrome
 - SR-797BN Brushed Nickel
 - SR-797ORB Oil Rubbed Bronze

For pricing visit our website at www.matco-norca.com or contact your local Matco-Norca representative

M MATCO-NORCA

Global sourcing. National compliance. Local service.

CALIFORNIA

• Phone: 866-532-8306

• Fax: 866-532-8307

TEXAS

• Phone: 800-935-5456

• Fax: 713-680-2999

ILLINOIS

• Phone: 844-412-5068

• Fax: 800-640-2252

GEORGIA

• Phone: 800-433-7526

• Fax: 800-533-5134

NEW YORK

• Phone: 800-431-2082

• Fax: 845-278-9056

WEB: www.matco-norca.com • EMAIL: mail@matco-norca.com

